



# Regular Giving to St Saviour's

*Your contribution towards our life & mission.*



**The Parish Giving Scheme is an easy way to make a regular donation to St Saviour's by Direct Debit, giving you full control over your giving.**

Knowing that regular donations will be received enables us to plan ahead: to grow mission & ministry in our local community, and offer some protection from unforeseen situations.

*You can sign up and adjust your giving:*

**by post**



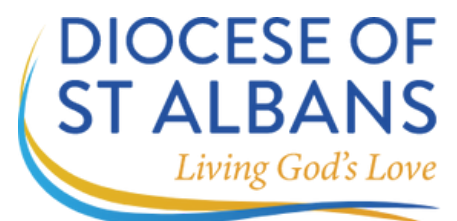
**by phone**



**online**



[www.parishgiving.org.uk](http://www.parishgiving.org.uk)



# Why we need your support

**Regular giving from individuals like yourself is the primary way in which St Saviour's sustains its mission & ministry - parish churches receive no income from the government or from the Church of England.**

So gifts from our congregation, community & supporters really are vital to the church's life and work, as we continue to serve those around us and safeguard the legacy of faith, music and worship which we have inherited.

*Regular committed giving helps us to plan financially and to grow God's church now and in the years ahead.*



## How your regular gift will make a difference...

Here's a snap-shot of our collective **monthly** giving. The bar graph shows the current congregational giving levels.

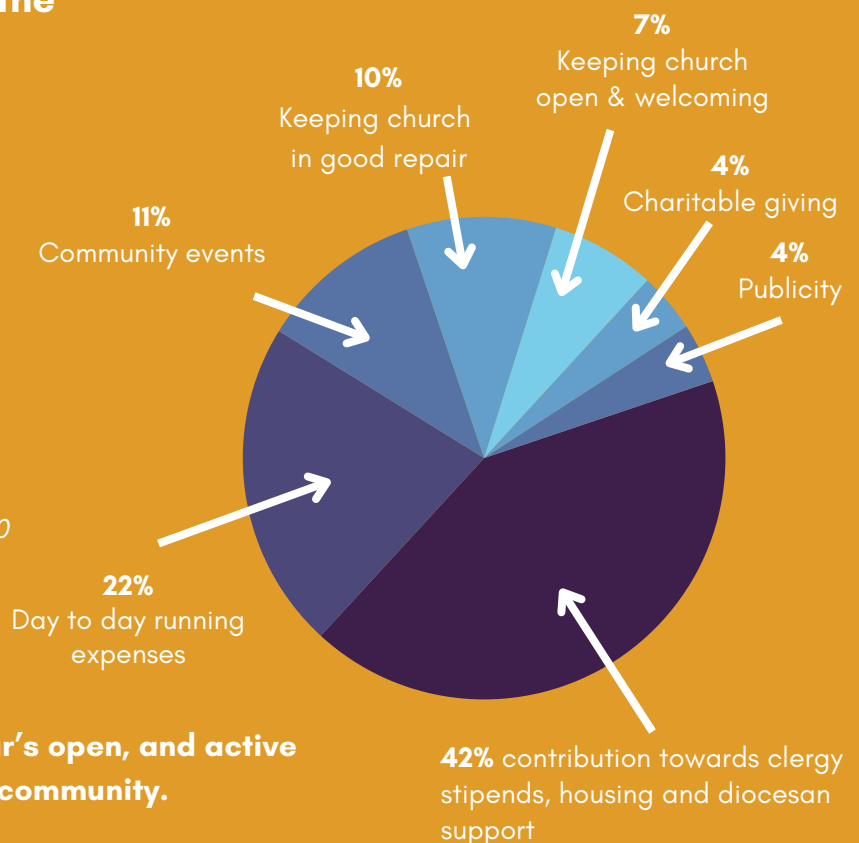
Which band are you in at the moment?

**Could you take your giving to the next level?**



You may find it helpful to know how your gifts are used.

Currently our spending breakdown as follows:



**It costs £398 per day to keep St Saviour's open, and active in mission and ministry in the parish & community.**

# Regular Giving to St Saviour's

**A monthly gift by direct debit is the most effective way to give to the life and work of St Saviour's**, especially through ways which *reduce* administration for our parish. It helps us to fund our mission, and to budget and use resources wisely.

*We are very grateful for all gifts that are given - thank you.*



## How does the Parish Giving Scheme work?

The Parish Giving Scheme (PGS) is a mechanism for regular giving by direct debit, which we encourage you to transfer to.

### *Benefits to you:*


- You are **in control** of how much you give
- You can *increase* or *decrease* your gift at any time **online**, by **telephone** or by **post**
- You can choose to remain **anonymous**
- You can choose to increase your gift automatically each year, in line with inflation, to **protect the value** of your gift. *If you do, you will receive an annual letter advising you of the increase, when you can opt not to go ahead with the increase.*
- The Direct Debit guarantee **protects all gifts**, making them safe and secure


### *Benefits to St Saviour's:*

- Regular gifts help provide **predictable cash flow**. This helps us to invest in areas most important to growing our mission and ministry - whether that's youth work, community engagement, bereavement support, or something else. Also to be safe-guarded against unforeseen situations.
- Gift Aid is **automatically collected**, which means less administration work for our PCC Treasurer and Gift Aid Secretary.
- The scheme is **free of charge** for donors *and* for churches.

*Once you have decided on your gift amount, you can sign up:*

 online **www.parishgiving.org.uk**

 by phone **0333 002 1271**

 by post - please collect a **gift form**

Please quote  
St Saviour's  
Parish Code  
**320632206**

or scan here:



## Standing Order

*If you would prefer to manage your giving through Standing Order, please arrange this yourself. If you need any help, please contact our Treasurer.*

# Your Gift Matters

**St Saviour's plays a significant role in the life of our local community.** It offers a rich tradition of worship, and is a steadfast presence and spiritual home for many.

As a church family we offer welcome and hospitality to all. We extend our mission of care and nurture into our local community and offer a sacred space in which to celebrate key moments in life's journey.

It is our 'duty and our joy' to share God's love and hope through our life and work, and in the cycle of prayer and worship which we offer week by week.



## Living Generously

**As Christians, we believe that all we *have* and all we *are* is a gift from God.** Each of us is blessed in a variety of ways, and we are invited to use these to bless others, giving of ourselves as an outpouring of love to support our local communities.

St Saviour's seeks to maintain & foster a sense of spirituality, tranquillity and celebration in our part of St Albans. We have a responsibility for the stewardship and care of our unique building which holds such great meaning to so many.

Will you consider how you can help to ensure that more people can benefit from the life and work of the church here, both now and the future.

*Your gifts will help us plan for the future, and respond to the needs of our parish and neighbourhood.*

Please pray and reflect on the information in this leaflet, reviewing your own contribution that will help us fulfill God's mission in our local community.

**Thank you for all you are able to give.**

You can sign up to support St Saviour's via the Parish Giving Scheme in three ways. Please quote our parish code **XXXX**



online  
[www.parishgiving.org.uk](http://www.parishgiving.org.uk)



by phone  
**0333 002 1271**



by post - please  
collect a **gift form**